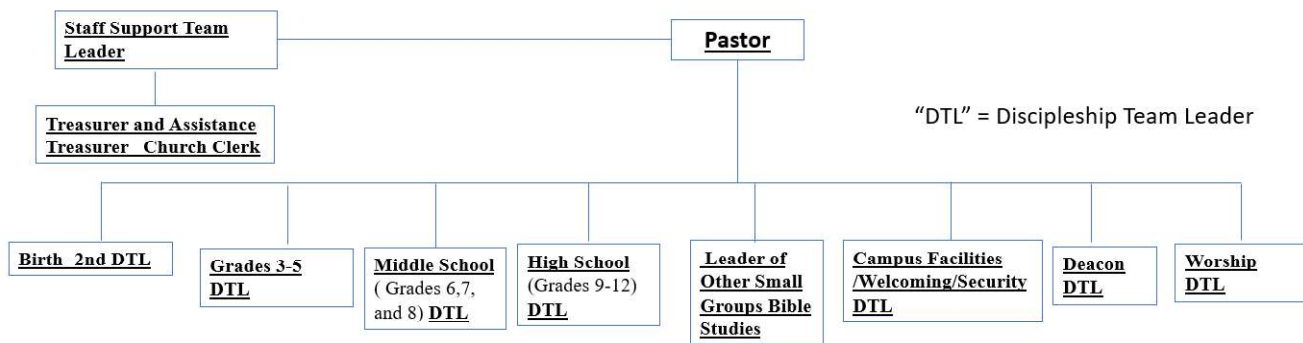


**Mission:** Love God, love people, disciple ourselves and others, serve others – **LOVE-DISCIPLE-SERVE**

**Discipleship process:** **live for Christ** all the time, **Connect** with lost people through our daily lives, **introduce** them to God, the Bible, and Jesus, **Encourage** them to attend worship and Bible Study and accept Christ, be ready when they cross the bridge to accepting Christ to **disciple** them into my small group prayer/Bible study, **mentor** them to discover their gifts, **mentor** them to serve in my team's ministry **or** another team's ministry and that teams, small group prayer/Bible study. **Connect - Introduce – Encourage – Disciple - Mentor**

**Core values:** **Biblically Faithful - Spiritually Growing - Passionate About Worship - Committed to the Uncommitted - Discipling the Next Generation - Connected Through Discipleship Teams**

**Implementation Plan - Pray, study the Bible, fellowship, outreach, disciple, mentor, and minister through Discipleship Teams**



**Responsibilities of EVERY Discipleship Team**

- Leaders are nominated by Pastor and Staff Support Team Leader and approved by church covenant members
- Members are selected/recruited/accepted/approved by Bethel Leadership Team
- Conduct the ministry of the team in a God honoring way in alignment with the Discipleship Process
- Have a personal daily pray and Bible study and a weekly team pray and Bible study time
- Connect with lost people in daily life and mentor them through the Discipleship Process
- Encourage, nurture, care for the members of the Discipleship Team
- If involved in ministry of other teams or special events, the primary team ministry and "team prayer and Bible Study" will take priority over other teams' ministry
- Have a Team Leader, Ministry Leader, Prayer & Bible Study Leader, Secretary to provide weekly report of attendance/participation (one person may have two roles)
- Schedule for Team Prayer & Bible Study, Ministry, and, if need, Ministry Planning/Practice

**Specific Objective/goals/responsibilities of teams**

- **Staff Support Team**
  - o Team is nominated by the Pastor and Staff Support Team Leader and approved by the church
  - o Nurture and care for the Pastor and Staff
  - o Establish the salary for the pastor
  - o Approve the performance evaluations of paid staff members performed by the Pastor
  - o Audit the financial records of the church to assure they were expended according to the budget
  - o Conduct an annual performance evaluation of the pastor
  - o Legal Representatives of the church (Currently done by "Trustees")

- **The four Birth through High School teams**
  - Conduct /lead all ministry/discipleship activities done by Bethel for that age group
  - Establish a standard of “spiritual maturity/Bible knowledge” desired for children in that age group to reach prior to moving to the next age group
  - Have a “remediation” process for children coming to be involved with discipleship for the first time to get them up to the level of “spiritual maturity/Bible knowledge” for their age (includes age specific “new member” training)
  - In Middle school and high school have a mentoring process to encourage
  
- **Other Small Group Prayer and Bible Study Teams**
  - Have a personal daily pray and Bible study and a weekly team pray and Bible study time
  - Connect with lost people in daily life and mentor them through the Discipleship Process
  - Encourage, nurture, care for the members of the Discipleship Team
  - Seek out ways to get involved in a ministry through one of the Discipleship Teams
  
- **Campus Facilities /Welcoming/Security Team**
  - Conduct all activities needed to ensure all grounds and facilities, including the church network (Wi-Fi), are in proper condition/functioning and create a positive impression for all members and guests
  - Conduct all activities (welcoming/security/ushering) to enable all members and guests to have a positive experience for regular and special worship services

#### **Deacon Discipleship Team**

- Care for elderly, widows, and poor
- Be the key ones to pray for the Pastor, the Discipleship Team and their leaders
- Nurture members who are not in Discipleship Teams striving to get them connected to one of the Discipleship Teams
- Prepare and conduct the Lord’s Supper and support the Baptisms services

#### **Worship Discipleship Team**

- Audio Visual functions
- Choir/Musicians/Band/Praise Teams

Each Discipleship Team Leader would report to the Pastor. As Bethel grows, some Discipleship Teams may be organized under a “Ministry Area Discipleship Team Coordinator” who would then report to the pastor. This team of **the pastor and Disciple Team Leaders/Area coordinator** will be known as the **Bethel Leadership Team (BLT)**.

The **Bethel Leadership Team (BLT)** would have these responsibilities:

- Establish which ministries Bethel will conduct
  - Approve any new ministries proposed and assign the selected ones to a Discipleship Team or establish a new team
- Establish the budget for each Discipleship Team for church approval at the team level
- Develop the short- and long-range plans for the church
- Coordinate the Discipleship Team member selection/requesting of people to serve on the teams